



TO REMOVE RACK FROM PALLET

Pallets are accessible from all four sides with a forklift or pallet jack. Be sure your equipment can handle the weight and size. USE CAUTION WHEN LIFTING RACKS!! RACKS ARE TOP HEAVY!! Rack weights and dimensions are noted below.

Single-Faced Rack Dimensions						
Rack Assy No.	Rack Description	Length in (mm)	Width in (mm)	Height in (mm)	Rack Wt. w/Cages lbs (kg)	Rack/pallet/crate Wt. lbs (kg)
M85010S1	14-Cage	78 (1982)	21 (534)	33 (838)	150 (68)	212 (97)
M85010S2	28-Cage	33 (838)	32 (591)	84 (1918)	290 (132)	500 (227)
M85010S3	42-Cage	55 (1397)	32 (591)	84 (1918)	431 (195)	677 (307)
M85010S4	56-Cage	71 (1803)	32 (591)	84 (1918)	579 (263)	858 (389)
M85010S5	70-Cage	88 (2235)	32 (591)	84 (1918)	722 (327)	1026 (465)
Double-Faced Rack Dimensions						
M85015D2	28-Cage	32 (813)	41 (1042)	84 (1918)	281 (127)	495 (225)
M85015D4	56-Cage	39 (991)	41 (1042)	84 (1918)	553 (251)	764 (338)
M85015D6	84-Cage	55 (1397)	41 (1042)	84 (1918)	869 (394)	1084 (492)
M85015D8	112-Cage	71 (1803)	41 (1042)	84 (1918)	1141 (518)	1388 (630)
M85015D10	140-Cage	88 (2235)	41 (1042)	84 (1918)	1412 (640)	1705 (773)

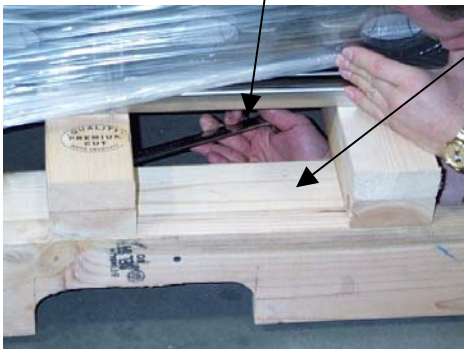
IF YOUR RACKS ARE SHIPPED VIA OCEAN CONTAINER (NOT CRATED) PLEASE SKIP TO STEP #4

1. Remove the top using a Phillips screwdriver.
(The top may consist of more than one section)
2. Remove one of the end sections using a Phillips screwdriver.



3. Remove each side panel, one at a time.

4. Remove the bolts that hold the rack to the pallet using a 3/4" wrench.



5. Carefully lift the rack from the pallet with a forklift. Lift from the side, high enough to clear the casters, and then pull the pallet out. Set the rack down on the casters and remove shrink-wrap.

CAUTION: BE SURE THE MODULE CLEAN-OUT DOORS ARE CLOSED BEFORE LIFTING WITH THE FORKLIFT! THEY ARE LOCATED AT THE BOTTOM OF THE PLENUMS AND COULD BE DAMAGED BY THE FORKLIFT IF LEFT OPEN!