



## OptiMICE CAGE FILTER REPLACEMENT (P/N C79071)

### Old Filter Removal:

From the outside of the cage push the filter out with both thumbs (Fig. 1). Repeat on the opposite end of the cage.

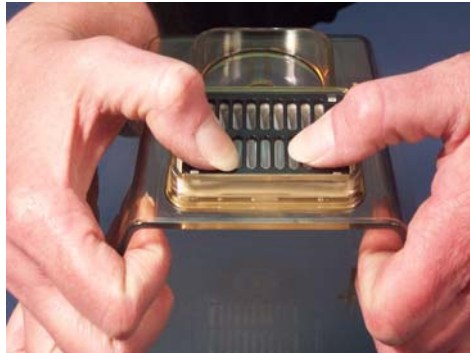


Fig. 1

### Filter Installation:

1. Wet the seals on the filter assemblies lightly with soapy water (Fig. 2).
2. From inside the cage, place the filter in the opening so that the rib on the seal is against the cage all around (Fig. 3).



Fig. 2

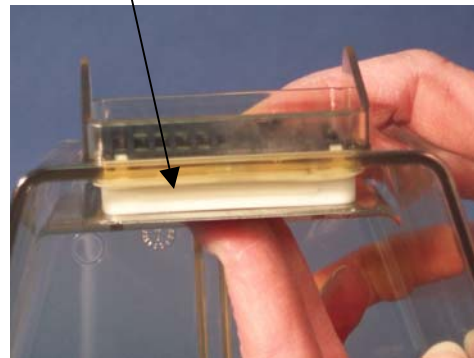


Fig. 3

3. Push the top portion of the filter into the cage until it snaps into place (Fig. 4). Push the bottom portion of the filter into the cage until it snaps into place (Fig. 5).

***(NOTE: it is important to push the filter into the cage in a two-step process to avoid damage to the seal.)***

4. Inspect the seal and be sure the ribs are straight and the seal has no tears (Fig. 6).

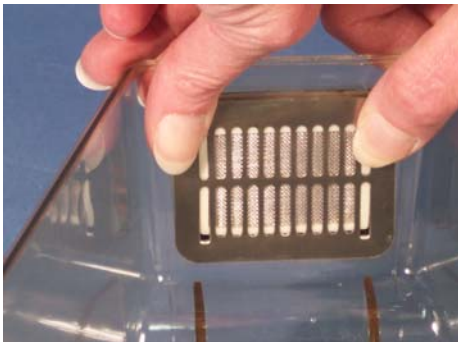


Fig. 4

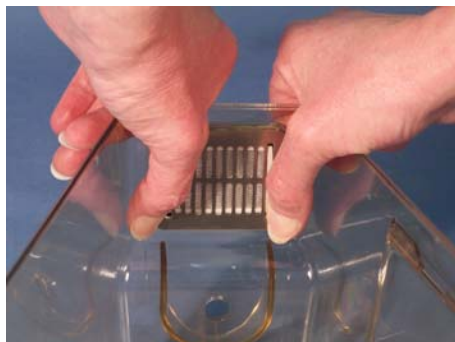


Fig. 5

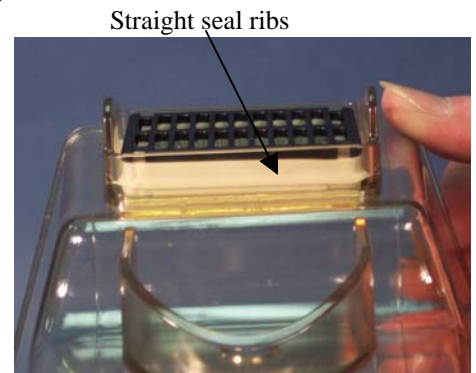


Fig. 6